



Professional Services Procurement Bulletin 2007-10 Caldwell-Christian Counties

COUNTY	<i>A. Caldwell B. Christian</i>
ROUTE	<i>A. KY 139 B. Marietta Drive in Hopkinsville</i>
DISTRICT	<i>2-Madisonville</i>
ITEM NO	<i>A. 2-1063.00 B. 2-1068.00</i>
PROJECT DESCRIPTION	<i>A. Replace 3 bridges and approaches on KY 139 over Donaldson Creek (B04), (B05), (B06). B. Replace bridge and approaches on CS 1007 (Marietta Drive) over South Fork of Little River (C80).</i>
PROJECT MANAGER	<i>Joe Plunk</i>
USER DIVISION	<i>Highway Design</i>
APPROXIMATE FEE	<i>A. \$250,000.00 (Lump Sum) B. \$110,000.00 (Lump Sum)</i>
PROJECT FUNDING	<i>A. Federal (BRO) B. Federal (BRZ)</i>
PURPOSE AND NEED	<i>Replace bridges and approaches.</i>
PROJECT LENGTH	<i>A. 0.6 miles B. 0.1 miles</i>
METHOD OF DESIGN	<i>The selected consultant shall utilize the CADD Standards for Highway Plans (2.0) policy in the development of the Highway Plans. (English Units)</i>
DBE REQUIREMENT	<i>None</i>

SCOPE	<i>The selected consultant will provide engineering services for Phase I and Phase II roadway design including drainage design, traffic control, erosion control, Advanced Situation Folders, Corps of Engineers permit drawings, right-of-way and utility plans and construction plans with construction cost estimates. Manuscript (1"=50') will be provided for Item No. 2-1063.00. The consultant will be required to do any pickup work on 2-1063.00. District 2 will provide the topographic survey and digital terrain model on 2-1068.00. District 2 will do any additional pick-up needed for the field survey.</i>
SPECIAL INSTRUCTIONS	<i>None</i>
AVAILABLE STUDIES	<i>N/A</i>
PHOTO-GRAMMETRIC SERVICES	<i>Manuscript (1"=50') will be provided by the Department in dgn format on discs for Item No. 2-1063.00.</i>
STRUCTURE DESIGN	<i>The selected consultant shall do the necessary engineering services to determine the preliminary sizes of the bridges and other drainage structures. Prequalification in the area of structure design is not required to be identified in the consultant's Response to Announcement.</i>
GEOTECHNICAL SERVICES	<i>Department</i>
TRAFFIC	<i>Traffic projections and related information will be provided by the Department.</i>
ENVIRONMENTAL	<i>Department</i>
UTILITY DESIGN	<i>N/A</i>
MAP	<i>Static Maps –See Pages 5 & 6</i> <i>Interactive Maps - A. http://kytcgis.ky.gov/syp_active/viewer.htm?ActiveLayer=16&Query=PROJID%3D%222-1063.00%22&QueryZoom=Yes</i> <i>B. http://kytcgis.ky.gov/syp_active/viewer.htm?ActiveLayer=16&Query=PROJID%3D%222-1068.00%22&QueryZoom=Yes</i>

PREQUALIFICATION REQUIREMENTS

<u>ROADWAY DESIGN</u>	<ul style="list-style-type: none"> • <i>Rural Roadway Design <\$250,000</i> • <i>Urban Roadway Design <\$250,000</i> • <i>Surveying</i>
------------------------------	--

PROJECT SCHEDULE & MILESTONES

<i>RESPONSE DATE</i>	<i>May 9, 2007 4:30 p.m. (Frankfort Time)</i>
<i>SELECTION COMMITTEE DATE MEETING</i>	<i>To Be Determined</i>
<i>PRE-DESIGN CONFERENCE</i>	<i>20 days from date of selection committee meeting</i>
<i>TENTATIVE DEADLINE FOR CONSULTANT FEE PROPOSAL</i>	<i>50 days from date of selection committee meeting</i>
<i>CONTRACT NEGOTIATIONS</i>	<i>60 days from date of consultant fee proposal</i>
<i>NOTICE TO PROCEED</i>	<i>120 days from date of contract negotiations</i>
<i>PRELIMINARY LINE & GRADE INSPECTION</i>	<i>A. April 20, 2008 B. April 20, 2008</i>
<i>JOINT INSPECTION</i>	<i>A. August 20, 2008 B. August 20, 2008</i>
<i>RIGHT-OF-WAY UTILITY PLANS</i>	<i>A. September 20, 2008 B. September 20, 2008</i>
<i>FINAL PLANS</i>	<i>A. February 20, 2009 B. February 20, 2008</i>

The selected consultant is expected to meet the scheduled milestone dates

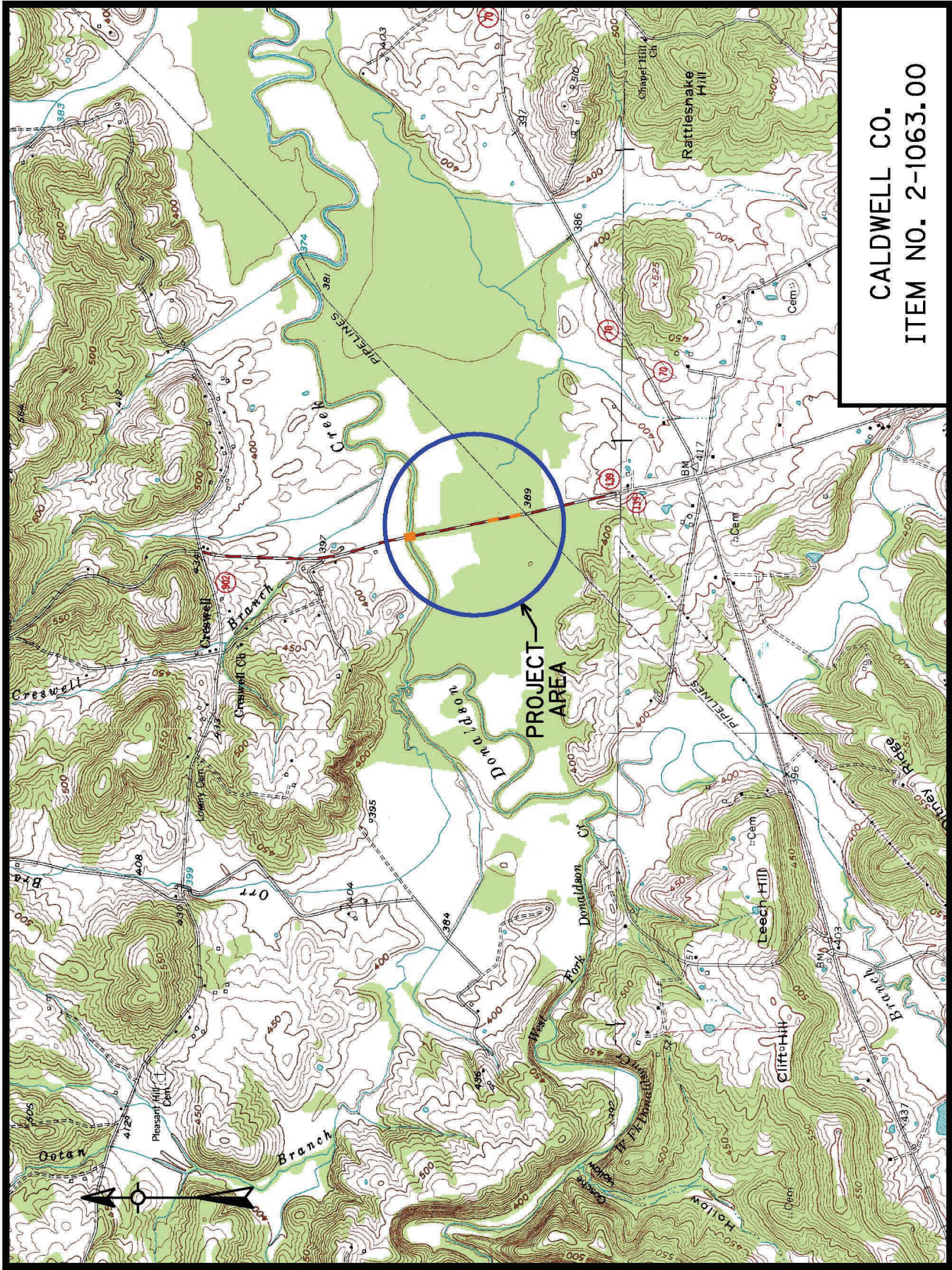
EVALUATION FACTORS

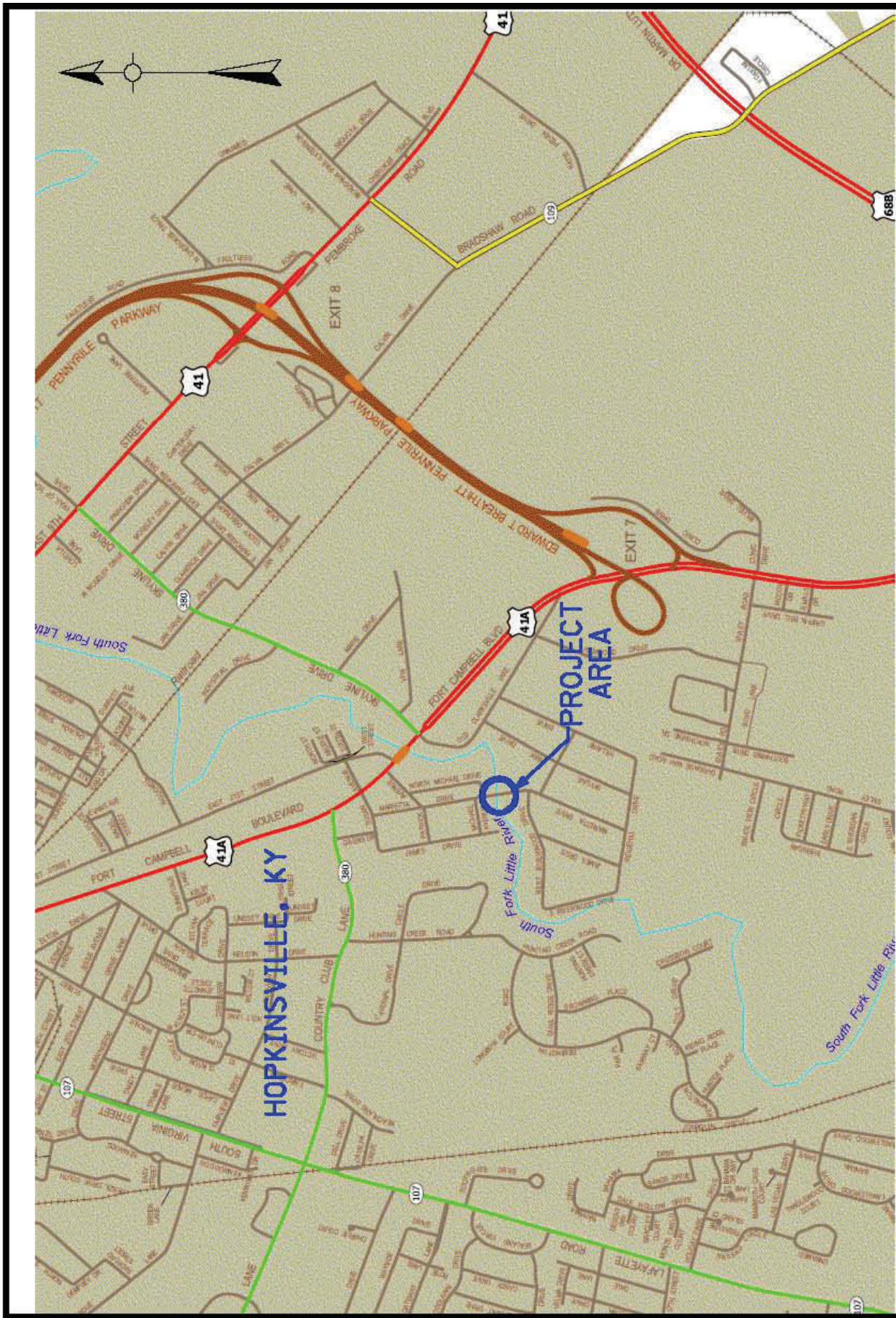
1. *Relative experience of consultant personnel assigned to project team with highway projects for KYTC and/or for federal, local or other state governmental agencies. (10 points)*
 2. *Capacity to comply with project schedule. (10 points)*
 3. *Past record of performance on projects of similar type and complexity. (10 points)*
 4. *Project approach and proposed procedures to accomplish the services for the project. (10 points)*
 5. *Consultant's Kentucky office where work is to be performed. (2 points)*
- 75% - 100% of work accomplished in Kentucky offices - 2 points*
- 26% - 74% of work accomplished in Kentucky offices - 1 point*
- 0% - 25% of work accomplished in Kentucky offices - 0 points*

SELECTION COMMITTEE MEMBERS

1. *Joe Plunk, P.E., User Division*
2. *Frank Bush, P.E., User Division*
3. *Stuart Goodpaster, Secretary's Pool*
4. *Ed McCracken, Secretary's Pool*
5. *George Blandford, Governor's Pool*

CALDWELL CO.
ITEM NO. 2-1063.00





**CHRISTIAN CO.
ITEM NO. 2-1068.00**